



JUNCTION

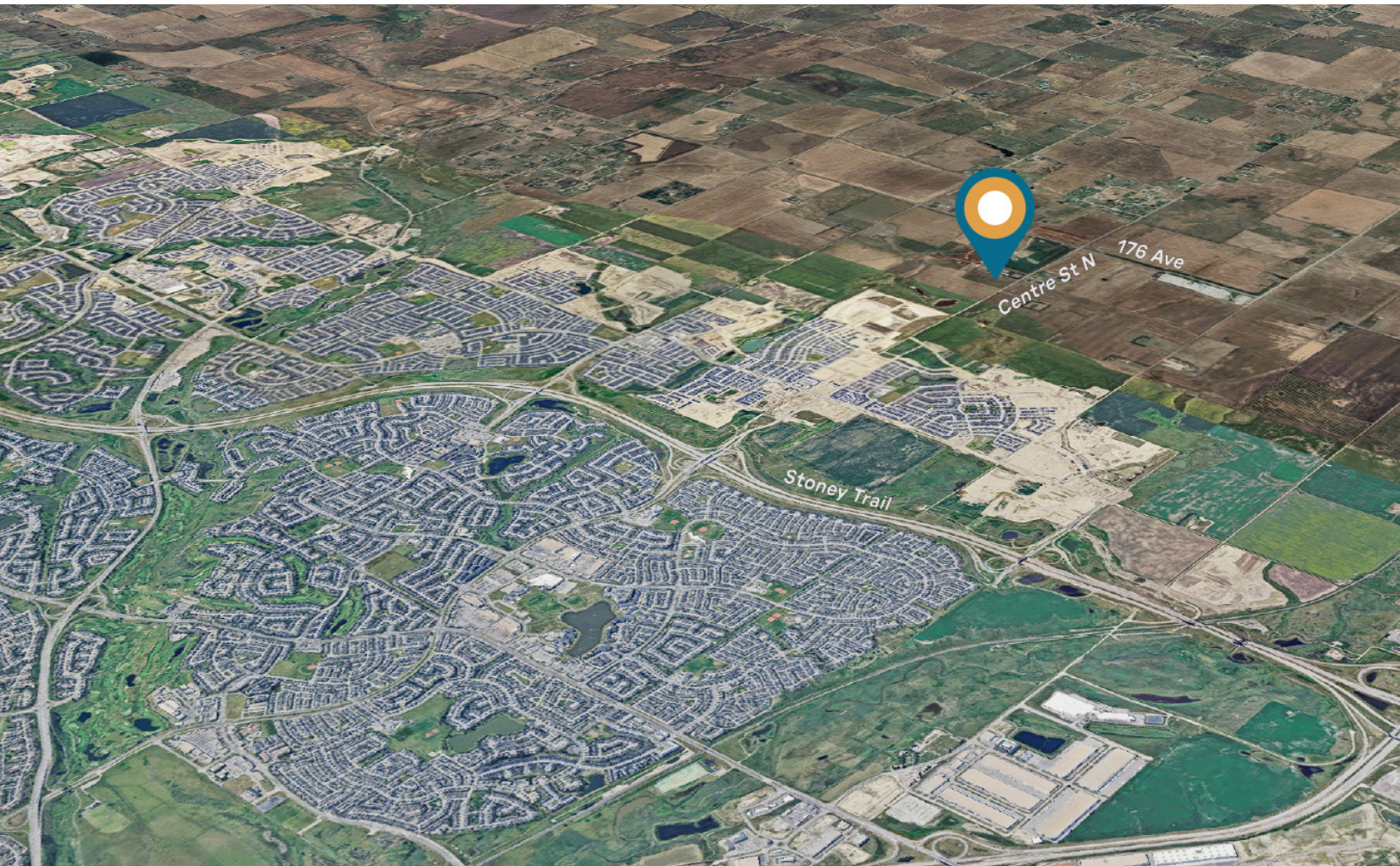
common ground  
VENTURES

THE | JUNCTION

ON COMMON GROUND

CASE FOR  
SUPPORT

# The Place



**North Central Calgary is one of Calgary's fastest growing areas.**

The communities of Livingston and Carrington are leading the way to a combined population growth in the area of over **35,000 people by 2029.**

Our community is at a critical moment. Demand for accessible programs, safe gathering spaces, and essential support services has grown significantly, yet **existing facilities are limited.**

To respond quickly and responsibly, we are seeking philanthropic and community support to build a **semi-permanent, multi-purpose space that will serve as a Community Hub** - a flexible, welcoming space that enables vital programs while laying the groundwork for long-term development.

Though Phase 1 is semi-permanent in structure, **this space will deliver immediate and meaningful impact**, providing a central place for connection, learning, wellness, and support.

We're calling it **The Junction on Common Ground**. With your help, we can meet urgent needs now while strengthening the community for years to come with Phase 2.

## Population Growth Projections

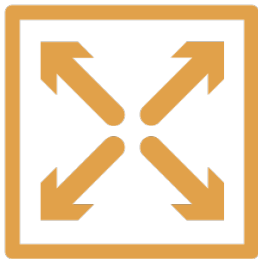
Sector	5-Year Avg (2025 - 2029)	5-Year Total (2025 - 2029)
North	7,583	39,917

Source: City of Calgary Suburban Residential Growth 2025-2029 Report

# The Need

Currently, there are **20,000+ people** and only **1 Community Hub** north of Stoney Trail in North Central Calgary.

That Means:



**Insufficient space** to host programs, workshops, and gatherings

Limited availability of **affordable rental or shared facilities** for cultural gatherings, weddings, and community events



Growing demand for **public, accessible services** such as daycare or language classes

**Barriers to participation**, especially for vulnerable populations

Without a dedicated, functional space, programs are constrained, partnerships are limited, and community members miss opportunities to connect and thrive.





A semi-permanent space offers a **practical, cost-effective, and timely solution** - allowing us to respond now rather than waiting years for the permanent facility in Phase 2.

# The Solution: A Semi-Permanent Community Hub

Data from **community engagement** led to the development of a **phased plan** that will meet the current and future needs of North Central Calgary.

We will create a hub that **WELCOMES EVERYONE** and is economically **SELF-SUSTAINING** with a focus on **CREATING OPPORTUNITIES** for employment, training and community service delivery.

We propose the construction of a **semi-permanent, purpose-built community hub** using **repurposed shipping containers**.

This approach provides a **durable, flexible, and sustainable solution** that can be deployed quickly while meeting safety, building, and accessibility standards.



*\* AI generated images*

Containers offer a proven, cost-effective way to create **high-quality community spaces**.

Designed for **adaptability**, the hub will serve as a **centralized space for a variety of programs and services** and can evolve as community needs change.



*\* AI generated images*

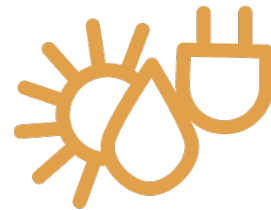
Key features include:



**Modular** container-based structures designed for **multi-purpose** use

The ability to **expand, reconfigure, relocate, or repurpose** the structure in the future

**Compliance** with building codes, and safety requirements



Solar power, parking, water and waste management **without needing to be connected to the grid**



**Accessible** design to ensure a **welcoming space** for all users

**“Building Belonging”**



## Benefits to the Community:

**Food Hall**

---

**Community Kitchen**

---

**Daycare**

---

**Large Room** for event rentals, weddings, and cultural gatherings

**Program and Meeting rooms** suitable for workshops and classes

---

Space for **wellness services, outreach, and partner-led programming**

---

**Subsidized rates** for non-profits and community associations





Using shipping containers allows for **faster construction timelines, low environmental impact, reduced capital costs, and long-term flexibility**, ensuring responsible stewardship of funds while **maximizing community benefit**.

With this approach, we can deliver **immediate benefits while maintaining flexibility** for long-term planning.

The temporary hub **bridges the gap** between today's needs and tomorrow's vision for North Central Calgary.

# Call to Action

We invite **you** to be part of this important initiative.

## Your support will:

Create **immediate access** to essential community programs

Provide **safe, welcoming places** for connection and growth

Demonstrate and strengthen **leadership and commitment to community**, well-being and resilience

## DONATE TODAY

### Visit Us For More Information:



[www.thejunctiononcommonground.com](http://www.thejunctiononcommonground.com)

### Reach Out To Us:



[hello@thejunctiononcommonground.com](mailto:hello@thejunctiononcommonground.com)

Together, we can turn a **temporary solution into a lasting impact**. Join us in building a space where **community happens – now!**



**JUNCTION**

common ground  
**VENTURES**

